



**NIPPON SALVAGE**  
Since 1934

# Company Brochure

# Top message

We thank you very much for your continued understanding and support of our business activities.

We play an active role in the marine salvage business in the Pacific Ocean and other seas around the world as our workplace since 1893, when we took our first steps as the salvage department of Mitsubishi Nagasaki Shipyard.

In response to the growing global concern for the marine environment, we are actively engaged in business activities such as the removal of oil and other harmful substances from vessels in distress and shipwrecks. Through these activities, we are contributing to the preservation of the marine environment.

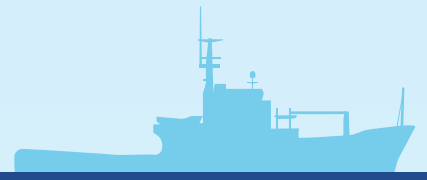
To be always prepared for the worst, we have been expanding and maintaining our salvage tugs, work barges, and a large variety of cutting-edge work equipment. Our salvage staff works daily with a strong sense of passion and mission, adding to their advanced skills and techniques needed for the job.

We have also been expanding our activities into the marine construction field by utilizing the technology and expertise we have cultivated over many years in the marine salvage business. We are actively involved in marine development projects, such as the laying of submarine power and communication cables to meet the needs of our customers.

We will continue to contribute to society through our business activities, including marine salvage and marine construction, and make great strides toward the future. For this, we extend our sincere appreciation for your continued support and understanding.

The Nippon Salvage Co., Ltd.  
Kazuhiro Sekine, President

# Major shareholders

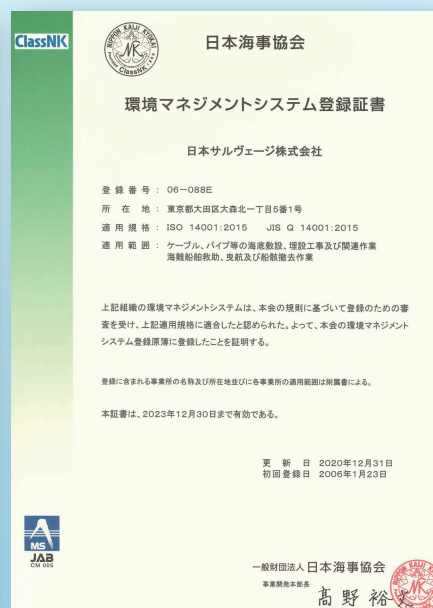
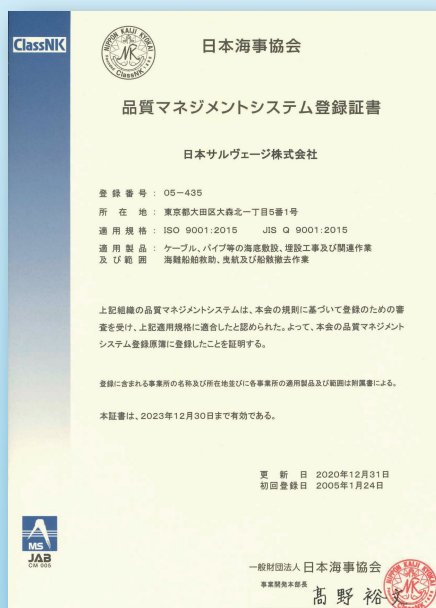


- Tokio Marine Nichido Fire Insurance Co., Ltd.
  - Mitsui Sumitomo Insurance Co., Ltd.
  - Sampo Japan Insurance Inc.
  - The Toa Reinsurance Co., Ltd.
  - Cognivision Inc.
  - The Jiken Center Co., Ltd.
  - Songaihoken Research Co., Ltd.
  - AIG General Insurance Co., Ltd.
  - Tokio Marine & Nichido Facilities, Inc.
  - Aioi Nissei Dowa Insurance Co., Ltd.
  - Mitsubishi Heavy Industries, Ltd.
  - Yorigami Maritime Construction Co., Ltd.
  - The Kyoei Fire & Marine Insurance Co., Ltd.
  - Nippon Yusen Kabushiki Kaisha.
  - Mitsui O.S.K. Lines, Ltd.
- (Listed in random order)

# Approvals and Certifications



## NK, KR, and LR Certificates

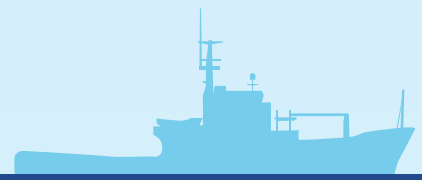


We are approved as a service provider of In-water Surveys by Lloyd's Register, Nippon Kaiji Kyokai and Korean Register of Shipping.

In addition, our quality management system complies with the applicable standards of ISO 9001:2015 and ISO 14001:2015.

## ISO Certificates

# Services



We, The Nippon Salvage Co., Ltd., are experts in rescuing vessels in distress and preventing and mitigating environmental damage. We are always ready to work, day and night, 24 hours a day, 365 days a year, to respond to any form of emergency, and we continue to fight on the frontlines of disaster sites where various risks are involved.

## 1. SALVAGE

- (1) **Property rescue** — **Salvage of vessels and cargos**
- (2) **Environmental rescue**
  - **Wreck removal**
  - **Prevention and recovery of oil and other pollutants**
  - **Search and recovery of sunken objects, and handling of damaged cargos**

## 2. MARINE CONSTRUCTION

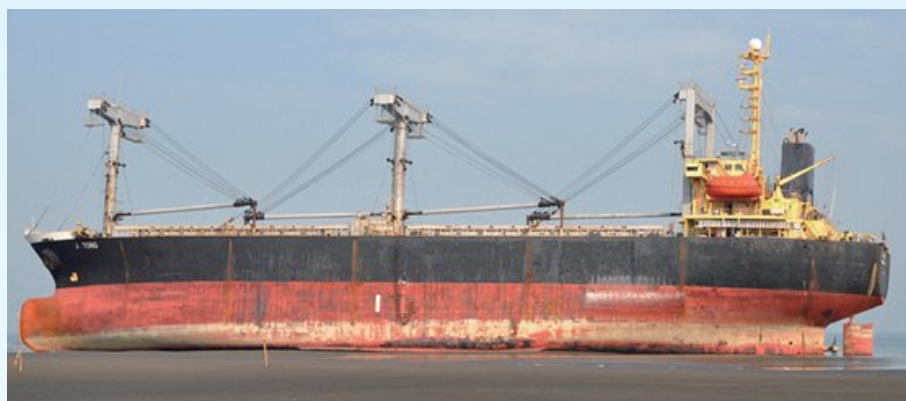
- (1) **Submarine cable laying & burial**
- (2) **Submarine water pipe construction**

## 3. OTHER SERVICES

- (1) **Towage services**
- (2) **Ocean surveys**
- (3) **Various offshore services**

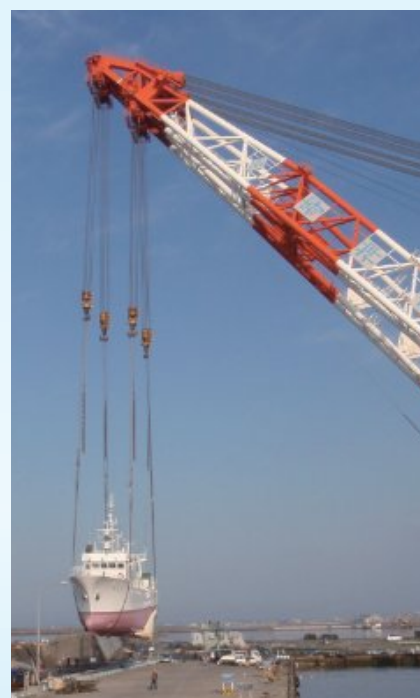
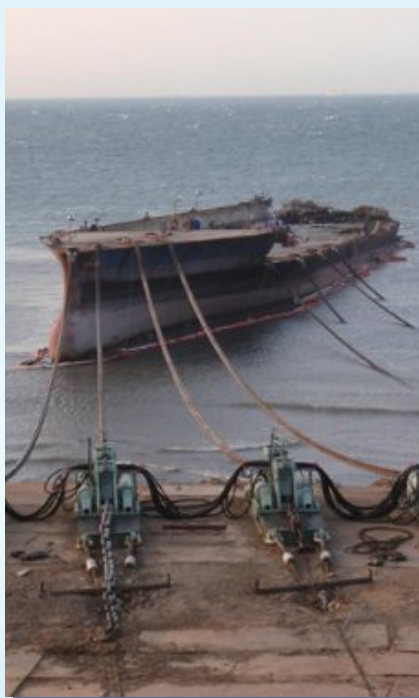
## Salvage of vessels and cargos

In addition to the experience, expertise, and advanced technology that we have accumulated over the 120 years since our founding, we are prepared for every emergency with our salvage tug "Koyo Maru" and many other salvage facilities, including our saturation (SAT) diving equipment. We maintain close cooperative relationships with many overseas salvage companies and local contractors to actively deal with salvage cases abroad.



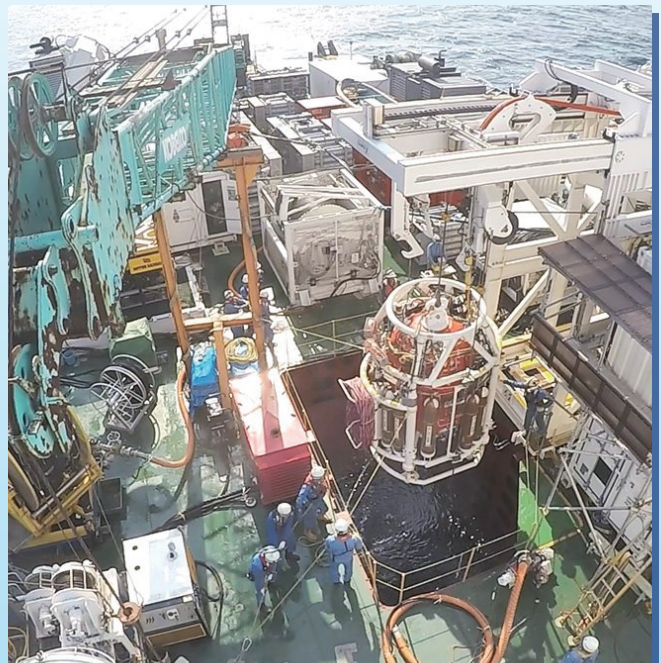
## Wreck removal

The removal of shipwrecks that sank, grounded, endured onboard fires/explosions, etc. We remove the shipwreck's hull, cargos, and oil pollutants that cause damage to the marine environment and dispose of them properly under local laws and regulations. During this process, we make full use of the unique techniques, experience, and knowledge we have cultivated throughout our many years in the salvage business.



## Prevention and recovery of oil and other pollutants

Once oil and other pollutants flow out of a distressed vessel, the damaging impact on the marine environment becomes immeasurable. We are always prepared to promptly mobilize our workforce and equipment to the site for the prevention, recovery, and clean-up of spilled oil and other pollutants, together with conducting other necessary tasks.



## Search and recovery of sunken objects, and handling of damaged cargos

We can search for and recover sunken aircraft and its parts, struts of hydrofoil boats, containers/construction equipment that accidentally spilled from wharves and construction sites, etc., by using sonars, ROVs, saturation (SAT) divers, etc. In addition, we can also assist in the handling and recovery of damaged cargo which poses a danger to its vessel and its surroundings.



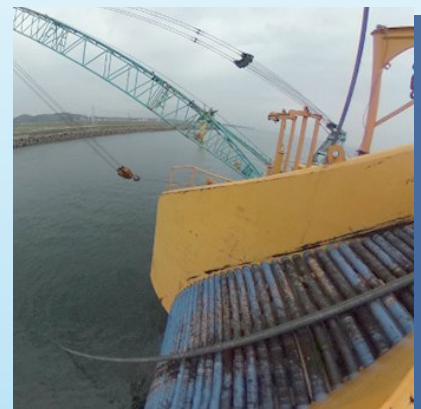


## Submarine cable laying & burial

There are many kinds of cables to be laid out on the seabed, such as power cables, communication cables, observation cables, and composite cables that combine multiple of these functions.

Power and communication cables are indispensable for our daily lives. Earthquake and tsunami observation cables are a crucial part of our infrastructure, not only for research purposes but also for protecting our lives. We are fully engaged in the installation of these cables.

Making full use of our experience, we are also working on installing submarine cables for offshore wind power generation facilities, which will be in full swing in various locations in the future.



## Submarine water pipe construction

Water is another significant part of our social infrastructure.

We are also laying submarine water pipes in the same way as laying submarine cables, which mainly contributes to the construction of social infrastructure on remote islands.

We also have much experience in the installation of deep seawater intake pipes using this technology.



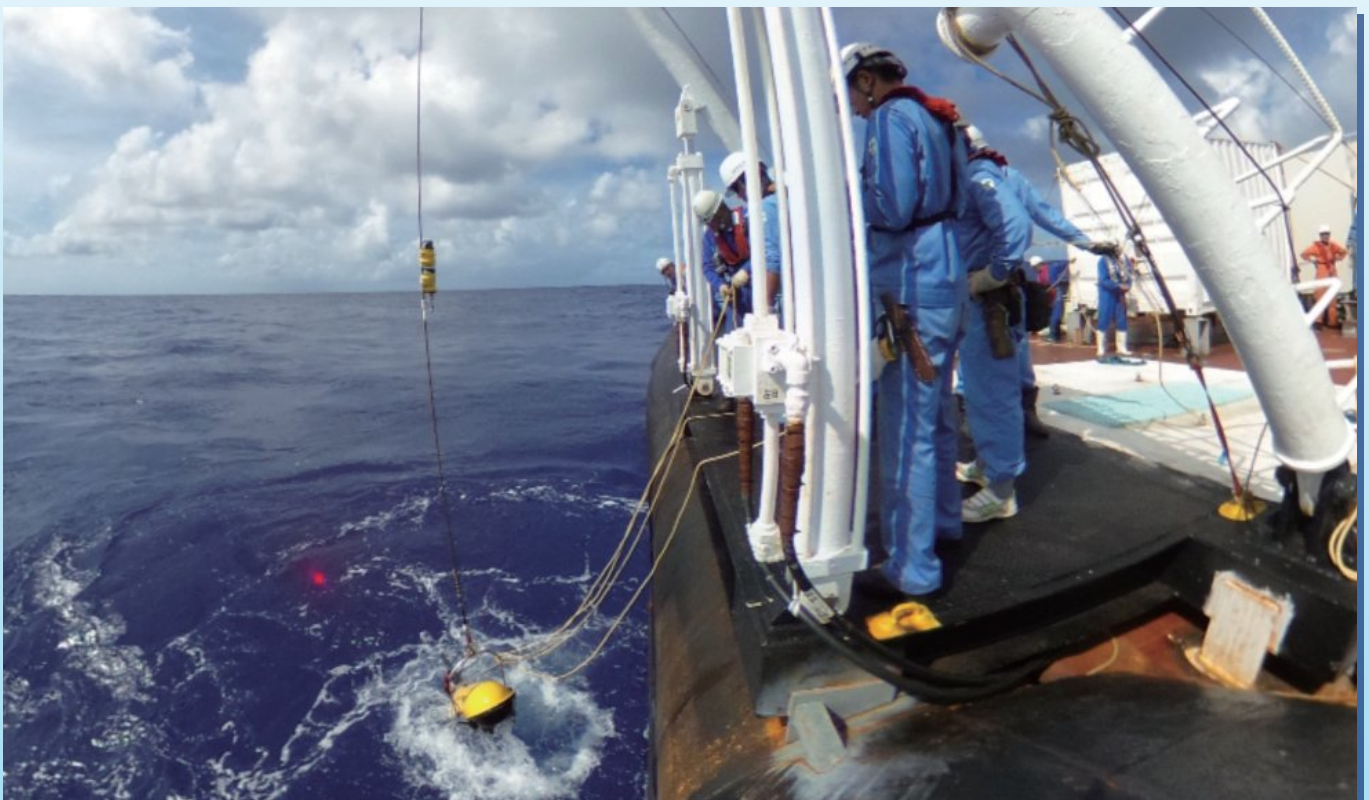
## Towage services

Besides rescue towage during salvage operations, commercial towage of offshore structures is also conducted by our ocean-going tug “Koyo Maru” which has one of the highest bollard pulls in Japan.



## Ocean surveys

We can provide the necessary assets for surveys of deep seabed resources with our fleet of in-house vessels and ROVs (Remotely Operated Vehicles). The observation equipment is safely lowered and recovered by our experienced and highly skilled staff.

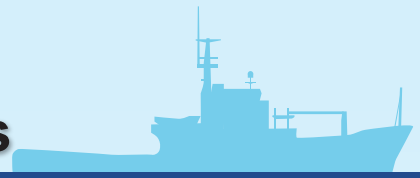


## Various offshore services

We can provide various types of offshore and underwater work according to our client's needs, such as diving work in dam lakes, buoy installation, and testing work at sea.

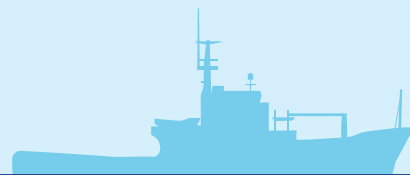


# List of salvage tugs and various types of work barges



	Type	Name	Int'l G/T	Bollard Pull L x B x D	Particulars (PDF)
	Salvage tug	Koyo Maru	2,906	161.2mt 80.64M x 15.50M x 6.75M	
	Salvage tug	Koyo Maru	2,474	132.5t 86.08M x 14.5M x 6.70M	
	Salvage tug	Hayashio Maru	497	53.09t 45.13M x 10.00M x 4.30M	
	Multipurpose work barge	Kaiyo	3,530	80.00M x 26.00M x 5.00M	
	Multipurpose work barge	Kaishin	3,042	70.03M x 26.00M x 4.50M	
	Multipurpose work barge	Masakuni	2,215	60.00M x 24.00M x 4.50M	
	Multipurpose work barge	Mishima	1,408	60.00M x 24.00M x 4.00M	

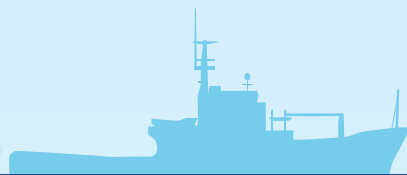
# List of equipment



	Name	Applicable Water Depth	Particulars (PDF)
	ROV(1000m) QUASAR8	10 ~ 1,000m	
	ROV(3000m) QUASAR9	10 ~ 3,000m	
	ROV(300m) FALCON	1 ~ 300m	
	ROV(500m) KWK	1 ~ 500m	
	Saturation (SAT) diving equipment	40 ~ 300m	
	Jet type cable burying machine "Aqua Jet"	0 ~ 35m	

※ROV: Remotely Operational Vehicle

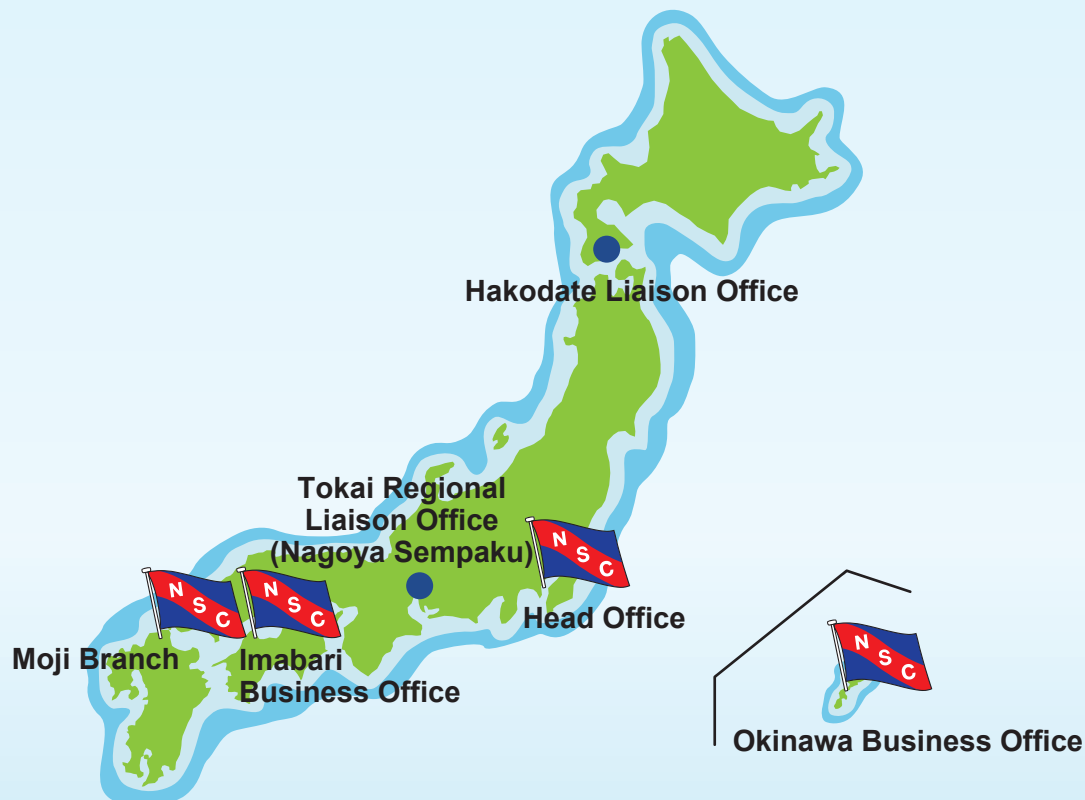
# Head Office, Branch Office, Business Office, Liaison Office



## The Nippon Salvage Co., Ltd.

**Head Office** 〒143-0016 1-5-1 Omorikita, Ohta-ku, Tokyo  
8th floor of JRE Omori Station East Exit Building  
TEL : 03-5762-7171 (representative) FAX : 03-5762-7177

**Moji Branch** 〒801-0804 15-73 Tanourakaigan, Moji-ku,  
Kitakyushu City, Fukuoka Prefecture  
TEL : 093-321-0937 (representative) FAX : 093-331-9466



## Emergency Response



**TOKYO 24/7 +81-3-5762-7172**

Tokyo Head Office

**MOJI 24/7 +81-93-321-0937**

Moji Branch